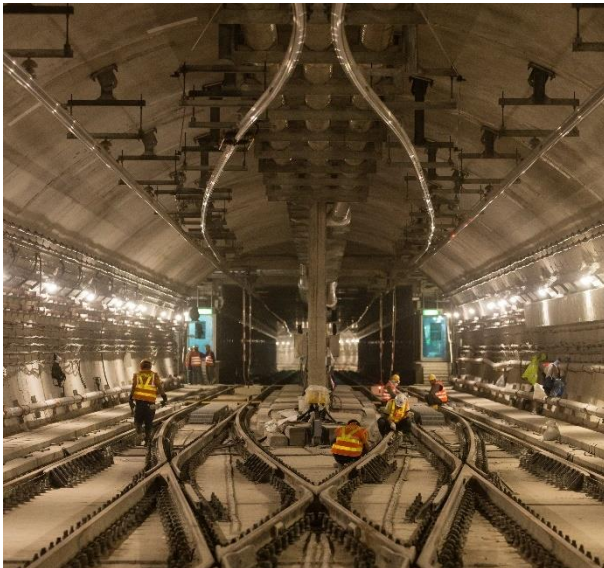


With **more than 40 years** of presence in the market, Alstom is a major supplier of signalling systems, rolling stock, services and infrastructure for metro lines in the Hong Kong Special Administrative Region of the People's Republic of China.

Since its first metro project in 1976, Alstom has built **a long-term and trustful relationship** with its key customer and partner, MTR Corporation (MTRC).



KEY FIGURES

>100 employees

6 metro lines in operation with Alstom signalling systems

Over **1,100** metro cars delivered

2021-2023 Top Employer award

2018-2023 Caring Company award



SIGNALLING

- Signalling solution deployed on six metro lines: Airport Express, Island Line (ISL) and its extension, Kwun Tong Line (KTL) and its extension, South Island Line (SIL (East)), Tung Chung Line (TCL) and Tsuen Wan Line (TWL)
- Hong Kong's first driverless (GoA4) metro system for SIL (East) equipped with Urbalis 400 CBTC solution
- Train detection system (based on CVCM 94 track circuit solution) deployed on six metro lines: Airport Express, ISL, KTL, TCL, TKL and TWL
- SACEM onboard signalling solution currently under deployment for new Q-trains
- Asset life extension of signalling systems for Airport Express (AEL) and TCL till 2047



ROLLING STOCK

- 759 metro cars for MTRC's urban railway lines (between 1976 and 1992)
- OpTONIX traction and train control management systems deployed on SIL (East) train fleet



INFRASTRUCTURE

- Track works and overhead line system for SIL (East) and KTL Extension
- Track works and overhead line system for Shatin to Central Link Phase I



SERVICES

- Refurbishment of metro cars
- Asset life extension services for SACEM signalling solution on urban lines (KTE, SIL and TWL) till 2028

SOUTH ISLAND LINE (EAST)

The first driverless metro line in operation in Hong Kong

- The South Island Line (East) started revenue service in December 2016 with very sound performance from day 1. Alstom was responsible for three main subsystems: signalling, infrastructure and traction of the rolling stock fleet.
- Alstom was awarded by MTR the signalling system contract in 2011 to design, supply, install, test and commission the line's signalling system, including a fully-automatic depot with its service proven Urbalis solution.



RESIGNALLING PROJECTS

Continued partnership in enhancing Hong Kong's transport network



- **Asset life extension of signalling system:** Alstom has been engaged by MTR in 2022 for a major refurbishment project, to upgrade and sustain the signalling system of Airport Express (AEL) and TCL for another 25 years.
- **CBTC signalling upgrade:** Alstom has been engaged by MTR in 2015 for a major refurbishment project, to upgrade the signalling system for four metro lines (ISL, KTL, TKL and TWL) to CBTC technology.
- **Train detection system:** Alstom is currently replacing and upgrading the rack circuit equipment for three metro lines (KTL, TWL and ISL). Originally supplied and installed by Alstom between 1985 and 1998, these track circuits will be replaced with Alstom's latest generation of track circuits, which will function for another 20 years.

FOR MORE INFORMATION:

Alstom
38 Tai Kok Tsui Road
Unit 1011-12, New Kowloon
Plaza
Kowloon – Hong Kong
Phone: +852 27246300
www.alstom.com